

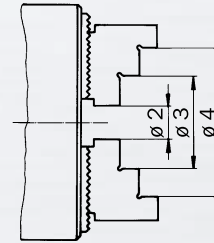
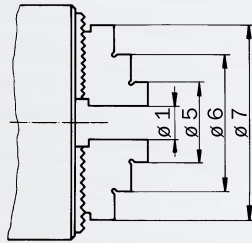


Backensystem für KV, KHL | Jaw system for KV, KHL

Zubehör | Accessories

Spannbereiche für
harte Aufsatzbacken HB

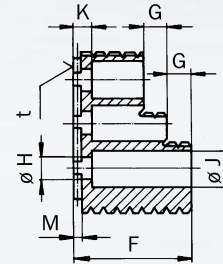
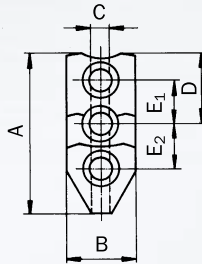
Chucking ranges for
hardened top jaws HB



Backentyp Jaw type	Futtergröße Chuck size	Außenspannung / External chucking								Innenspannung / Internal chucking					
		Ø 1		Ø 2		Ø 3		Ø 4		Ø 5		Ø 6		Ø 7	
HB 232	160	9 - 40	46 - 74	24 - 50	56 - 88	78 - 106	112 - 143	94 - 122	128 - 160	73 - 104	110 - 138	89 - 120	127 - 154	142 - 174	
HB 237	200	20 - 50	62 - 92	40 - 70	80 - 110	104 - 133	145 - 175	126 - 156	168 - 198	94 - 123	135 - 165	116 - 147	158 - 188	178 - 208	
HB 240	250	20 - 50	78 - 112	46 - 73	102 - 131	139 - 167	196 - 224	169 - 198	226 - 255	124 - 154	180 - 215	154 - 184	211 - 245	244 - 274	
HB 240	315	47 - 171		71 - 195		165 - 289		195 - 320		150 - 274		180 - 304		271 - 388	
HB 228	400	82 - 140	156 - 215	105 - 160	178 - 236	230 - 288	306 - 365	268 - 326	342 - 401	205 - 262	280 - 336	244 - 300	318 - 376	370 - 426	

Harte Aufsatzbacken HB
Ausführung Spitzverzahnung

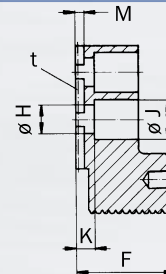
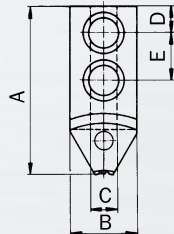
Hardened top jaws HB
Serrated style



Backentyp Jaw type	Futtergröße Chuck size	A	B	C	D	E ₁	E ₂	F	G	H	J	K	M	t	kg/Stück kg/piece
HB 232	160	66	25	10	30	17	19	38	6,5	10,5	16,2	7	3,0	1/16" x 90°	0,21
HB 237	200	79	30	12	35	21	21	44	8,0	13,0	18,0	8	3,5	1/16" x 90°	0,35
HB 240	250	112	40	16	50	29	29	60	12,0	17,0	25,0	10	4,0	1/16" x 90°	0,95
HB 240	315	112	40	16	50	29	29	60	12,0	17,0	25,0	10	4,0	1/16" x 90°	0,95
HB 228	400	144	50	20	67	38	38	75	15,0	22,0	33,0	11	5,0	3/32" x 90°	1,90

Harte Stangenspannbacken HBS
Ausführung Spitzverzahnung
Für Stangensbearbeitung

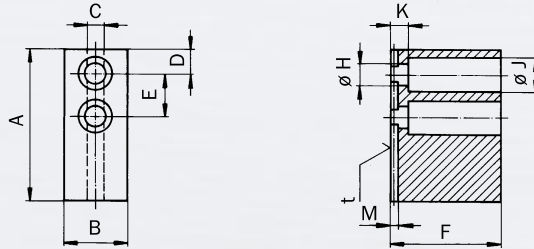
Hardened top jaws HBS
Serrated style
For bar work



Backentyp Jaw type	Futtergröße Chuck size	Spann Ø Chucking Ø	A	B	C	D	E	F	H	J	K	M	t	kg/Stück kg/piece
HBS 232	160	6,0 - 45	63,0	25	10	9,5	17	38	10,5	16,2	7	3,0	1/16" x 90°	0,23
HBS 237-1	200	8,6 - 46	82,0	30	12	12,0	21	44	13,0	18,0	8	3,5	1/16" x 90°	0,42
HBS 237-2	200	38,6 - 70	67,0	30	12	12,0	21	44	13,0	18,0	8	3,5	1/16" x 90°	0,35
HBS 224-1	250	10 - 18 40 - 76	122,5	40	16	15,0	29	60	17,0	25,0	10	4,0	1/16" x 90°	1,14
HBS 240	250	69 - 105	79,0	40	16	15,0	29	60	17,0	25,0	10	4,0	1/16" x 90°	-
HBS 224-1	315	10 - 140	122,5	40	16	15,0	29	60	17,0	25,0	10	4,0	1/16" x 90°	1,14
HBS 224-2	315	53 - 127	100,5	40	16	15,0	29	60	17,0	25,0	10	4,0	1/16" x 90°	1,01

Weiche Aufsatzbacken WB
Ausführung Spitzverzahnung

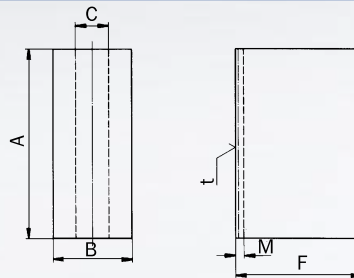
Soft top jaws WB
Serrated style



Backentyp Jaw type	Futtergröße Chuck size	A	B	C	D +0.05	E	F	H	J	K	M	t	kg/Stück kg/piece
WB 232	160	70	25	10	13	19	45	10,5	16,2	7	3,0	1/16" x 90°	0,45
WB 235	200	84	30	12	18	21	45	13,0	18,0	8	3,5	1/16" x 90°	0,90
WB 237	200	90	30	12	14	21	60	13,0	18,0	8	3,5	1/16" x 90°	1,00
WB 240	250	111	40	16	18	29	60	17,0	25,0	10	4,0	1/16" x 90°	1,80
WB 240	315	111	40	16	18	29	60	17,0	25,0	10	4,0	1/16" x 90°	1,80
WB 241	250	150	40	16	57	29	60	17,0	25,0	10	4,0	1/16" x 90°	2,31
WB 241	315	150	40	16	57	29	60	17,0	25,0	10	4,0	1/16" x 90°	2,31
WB 228	400	150	50	20	31	38	80	22,0	33,0	11	5,0	3/32" x 90°	2,80

Weiche Aufsatzbacken WBO
Ausführung Spitzverzahnung
Ohne Befestigungsbohrungen

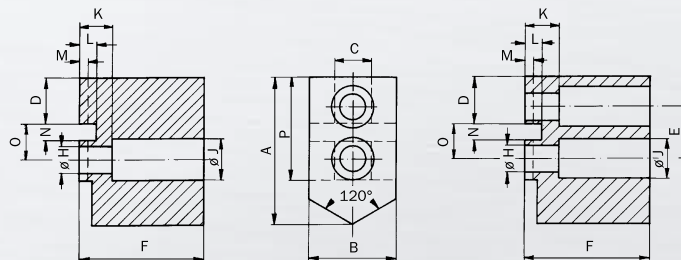
Soft top jaws WBO
Serrated style
Without fixing holes



Backentyp Jaw type	Futtergröße Chuck size	A	B	C	F	M	t	kg/Stück kg/piece
WBO 232	160	70	25	10	45	3,0	1/16" x 90°	0,60
WBO 235	200	84	30	12	45	3,5	1/16" x 90°	0,86
WBO 237	200	90	30	12	60	3,5	1/16" x 90°	1,24
WBO 240	250	111	40	16	60	4,0	1/16" x 90°	2,10
WBO 240	315	111	40	16	60	4,0	1/16" x 90°	2,10
WBO 241	250	150	40	16	60	4,0	1/16" x 90°	2,75
WBO 241	315	150	40	16	60	4,0	1/16" x 90°	2,75

Weiche Aufsatzbacken WB
Ausführung Kreuzversatz

Soft top jaws WB
Cross tenon style



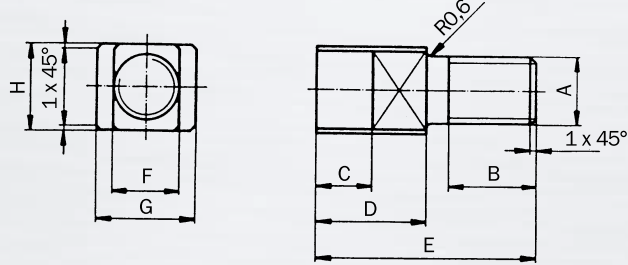
Backentyp Jaw type	Futtergröße Chuck size	A	B	C	D	E	F	H	J	K	L	M	N	O	P	kg/Stück kg/piece
WB 252	KV 160	70	28	16	21,0	25	45	14	20	15	10	4,5	10	17,5	52	-
WB 254	KV 200	90	32	16	23,0	30	45	14	20	15	10	4,5	12	21,0	65	-
WB 256	KV 250	120	40	20	28,0	40	60	18	26	15	10	4,5	16	28,0	89	-



Backensystem für KV, KHL | Jaw system for KV, KHL

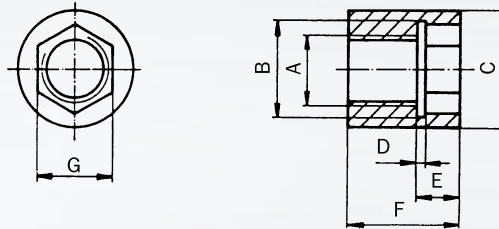
Zubehör | Accessories

T-Nutenschrauben TS
T-tenon screws TS



TYP TYPE	Futtergröße Chuck size	A	B	C	D	E	F _{g6}	G	H
TS 10	160	M 10	12	9,3	20,3	35,3	10	16	13
TS 12	200	M 12	14	9,0	23,2	40,5	12	18	14
TS 16	250 315	M 16	18	12,0	26,7	50,0	16	24	18
TS 20	400	M 20	23	16,0	32,7	62,0	20	30	25

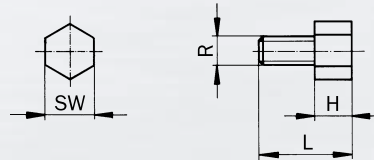
Muttern TM
Nuts TM



TYP TYPE	Futtergröße Chuck size	A	B	C	D	E	F	G
TM 10/1	160	M 10	10,2	16,0	2,0	7	16	SW 8,1
TM 12/1	200	M 12	12,2	17,8	2,0	8	19	SW 10,1
TM 16/1	250 315	M 16	16,2	24,5	2,0	10	25	SW 14,1
TM 20/1	400	M 20	20,2	32,0	2,5	11	32	SW 17,1

Auflagebolzen AB für
Greiferbacken HGKHA und HGKHI
Werkstoff C 35 K

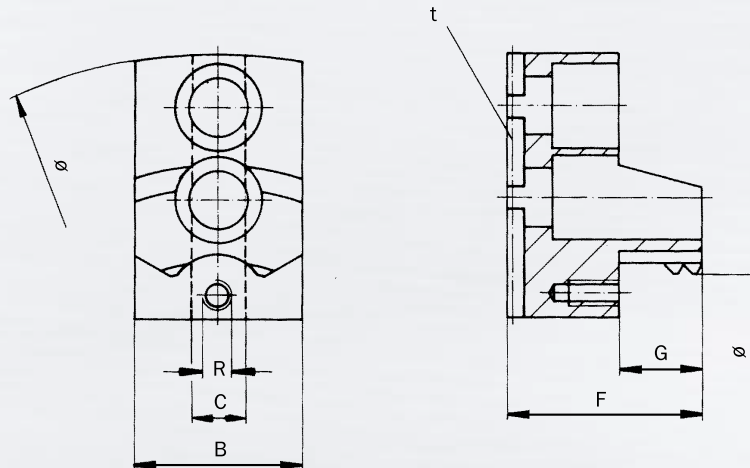
Supporting bolts AB for
gripper jaws HGKHA and HGKHI
Material C 35 K



TYP TYPE	Futtergröße Chuck size				H	L	SW	R
AB 56	160	200	250	315	5	13	10	M 6
AB 106	160	200	250	315	10	18	10	M 6
AB 156	160	200	250	315	15	23	10	M 6
AB 206	-	-	250	315	20	28	10	M 6
AB 58	-	-	400	-	5	17	14	M 8
AB 108	-	-	400	-	10	22	14	M 8
AB 158	-	-	400	-	15	27	14	M 8
AB 208	-	-	400	-	20	32	14	M 8

Harte Greiferbacken HGKHA
Ausführung Spitzverzahnung und
Außenspannung

Hardened gripper jaws HGKHA
Serrated style and external
chucking



Backentyp Jaw type	Futtergröße Jaw size	Außenspannung External chucking	Abmessungen Dimensions						Schwingkreis Swing diameter	kg/Stück kg/piece
			Ø	B	C	F	G	R		
HGKHA 141	160	43 – 80	30	10	37,0	13	M 6	1/16" x 90°	178	0,27
HGKHA 142	160	68 – 105	30	10	37,0	13	M 6	1/16" x 90°	178	0,27
HGKHA 143	160	93 – 128	30	10	37,0	13	M 6	1/16" x 90°	178	0,27
HGKHA 144	160	118 – 155	30	10	37,0	13	M 6	1/16" x 90°	190	0,25
HGKHA 170	200	49 – 84	35	12	50,0	20	M 6	1/16" x 90°	210	0,48
HGKHA 171	200	63 – 98	35	12	50,0	20	M 6	1/16" x 90°	210	0,45
HGKHA 172	200	84 – 121	35	12	50,0	20	M 6	1/16" x 90°	210	0,47
HGKHA 173	200	106 – 143	35	12	50,0	20	M 6	1/16" x 90°	210	0,47
HGKHA 174	200	128 – 165	35	12	50,0	20	M 6	1/16" x 90°	210	0,47
HGKHA 175	200	150 – 187	35	12	50,0	20	M 6	1/16" x 90°	230	0,55
HGKHA 176	200	170 – 207	35	12	50,0	20	M 6	1/16" x 90°	250	0,63
HGKHA 250	250	72 – 104	45	16	60,0	22	M 6	1/16" x 90°	325	1,40
HGKHA 251	250	92 – 125	45	16	60,0	22	M 6	1/16" x 90°	266	0,95
HGKHA 252	250	126 – 160	45	16	60,0	22	M 6	1/16" x 90°	266	0,90
HGKHA 253	250	160 – 194	45	16	60,0	22	M 6	1/16" x 90°	266	0,93
HGKHA 254	250	194 – 228	45	16	60,0	22	M 6	1/16" x 90°	266	0,93
HGKHA 250	315	50 – 160	45	16	60,0	22	M 6	1/16" x 90°	384	1,40
HGKHA 251	315	117 – 188	45	16	60,0	22	M 6	1/16" x 90°	332	0,95
HGKHA 252	315	152 – 224	45	16	60,0	22	M 6	1/16" x 90°	332	0,90
HGKHA 253	315	186 – 258	45	16	60,0	22	M 6	1/16" x 90°	332	0,93
HGKHA 254	315	220 – 293	45	16	60,0	22	M 6	1/16" x 90°	332	0,93
HGKHA 401	400	63 – 135	50	20	78,4	33	M 8	3/32" x 90°	430	-
HGKHA 402	400	130 – 194	50	20	78,4	33	M 8	3/32" x 90°	430	2,13
HGKHA 403	400	183 – 255	60	20	78,4	33	M 8	3/32" x 90°	430	-
HGKHA 404	400	243 – 315	60	20	78,4	33	M 8	3/32" x 90°	430	1,97
HGKHA 405	400	273 – 346	60	20	78,4	33	M 8	3/32" x 90°	430	1,96

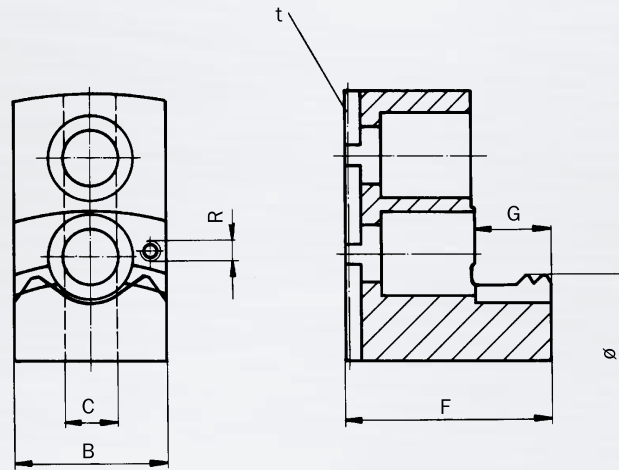


Backensystem für KV, KHL | Jaw system for KV, KHL

Zubehör | Accessories

Harte Greiferbacken HGKHI
Ausführung Spitzverzahnung und
Innenspannung

Hardened gripper jaws HGKHI
Serrated style and internal
chucking



Backentyp Jaw type	Futtergröße Jaw size	Außenspannung Internal chucking	Abmessungen Dimensions						Schwingkreis Swing diameter	kg/Stück kg/piece
			Ø	B	C	F	G	R		
HGKHI 141	160	38 – 74	30	10	37,0	13	M 6	1/16" x 90°	173	0,27
HGKHI 142	160	63 – 99	30	10	37,0	13	M 6	1/16" x 90°	173	0,27
HGKHI 143	160	93 – 130	30	10	37,0	13	M 6	1/16" x 90°	178	0,28
HGKHI 144	160	118 – 155	30	10	37,0	13	M 6	1/16" x 90°	180	0,25
HGKHI 171	200	70 – 108	35	12	50,0	20	M 6	1/16" x 90°	216	0,60
HGKHI 172	200	92 – 129	35	12	50,0	20	M 6	1/16" x 90°	216	0,53
HGKHI 173	200	114 – 151	35	12	50,0	20	M 6	1/16" x 90°	216	0,53
HGKHI 174	200	136 – 173	35	12	50,0	20	M 6	1/16" x 90°	216	0,53
HGKHI 175	200	158 – 196	35	12	50,0	20	M 6	1/16" x 90°	216	0,53
HGKHI 251	250	98 – 132	45	16	60,0	22	M 6	1/16" x 90°	271	1,20
HGKHI 252	250	134 – 166	45	16	60,0	22	M 6	1/16" x 90°	271	1,00
HGKHI 253	250	168 – 200	45	16	60,0	22	M 6	1/16" x 90°	271	0,80
HGKHI 254	250	202 – 235	45	16	60,0	22	M 6	1/16" x 90°	271	0,95
HGKHI 251	315	124 – 195	45	16	60,0	22	M 6	1/16" x 90°	336	1,20
HGKHI 252	315	158 – 230	45	16	60,0	22	M 6	1/16" x 90°	336	1,20
HGKHI 253	315	192 – 265	45	16	60,0	22	M 6	1/16" x 90°	336	0,95
HGKHI 254	315	226 – 299	45	16	60,0	22	M 6	1/16" x 90°	336	0,95
HGKHI 401	400	102 – 174	50	20	78,4	25	M 8	3/32" x 90°	436	2,94
HGKHI 402	400	153 – 225	50	20	78,4	33	M 8	3/32" x 90°	430	2,40
HGKHI 403	400	213 – 285	50	20	78,4	33	M 8	3/32" x 90°	430	1,93
HGKHI 404	400	273 – 345	60	20	78,4	33	M 8	3/32" x 90°	430	-
HGKHI 405	400	323 – 396	60	20	78,4	33	M 8	3/32" x 90°	460	-