



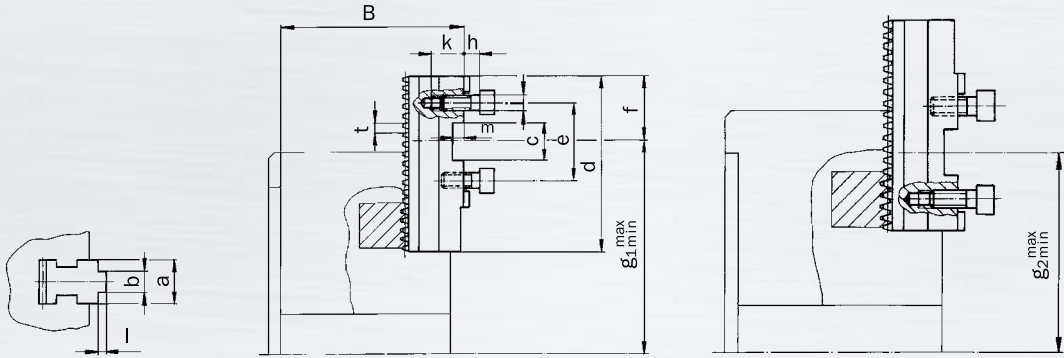
Backensystem KHNC | Jaw system KHNC

Zubehör | Accessories

Harte, umkehrbare Grundbacken GB ...
Hardened, reversible base jaws GB ...

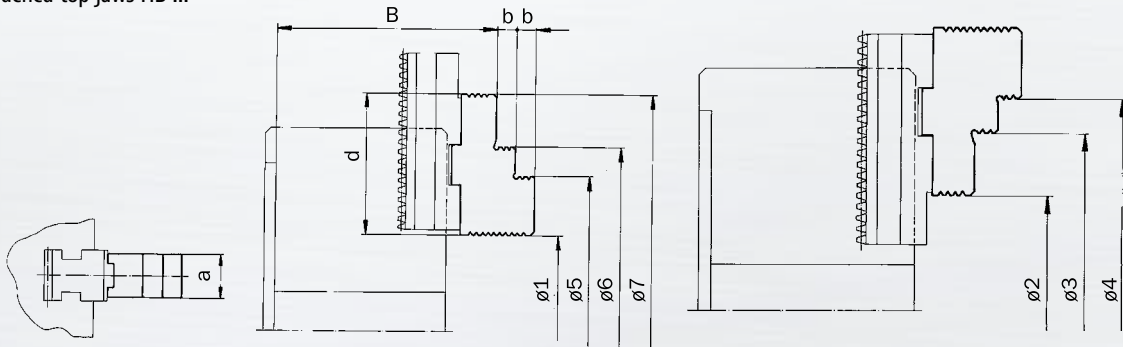
Grundbackenstellung I
Base jaw position I

Grundbackenstellung II
Base jaw position II



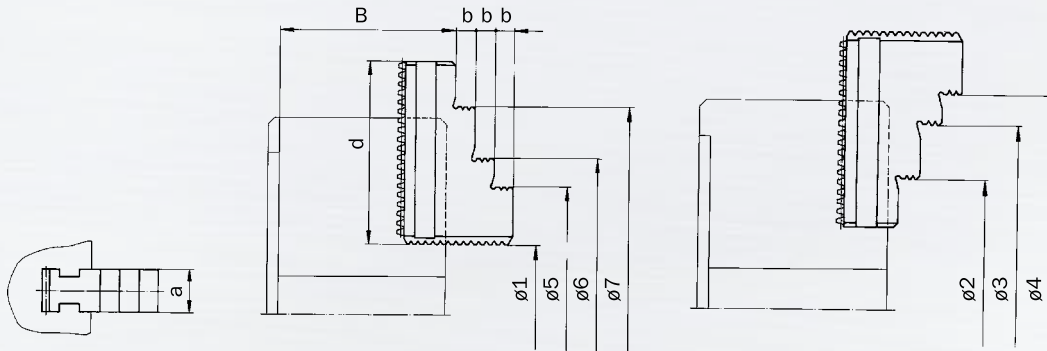
Backentyp Jaw type	Futtergröße Chuck size	B	a	b	c	d	e	f	g ₁		g ₂		h	i	k	l	m	t	kg / Stück kg / piece
									max	min	max	min							
GB 140	KHNC 140	79	20	8	18	56,6	32	28,8	61,75	38,1	59,65	36,0	9	M8x1,0	13	2,5	5	3,14	-
GB 160	KHNC 160	87	20	8	18	74,0	32	28,0	76,00	50,5	61,60	36,1	9	M8x1,0	16	2,5	5	4,80	0,25
GB 160	KHNC 185	87	20	8	18	74,0	32	28,0	83,50	58,0	69,10	43,6	9	M8x1,0	16	2,5	5	4,80	0,25
GB 200	KHNC 200	95	22	10	20	90,0	40	33,0	81,00	65,9	55,00	39,1	9	M8x1,0	17	3,0	6	4,80	0,40
GB 250	KHNC 250	110	26	12	20	110,0	40	36,0	106,30	80,5	69,70	43,9	11	M12x1,5	23	3,0	6	6,00	0,65
GB 250	KHNC 315	110	26	12	20	110,0	40	36,0	130,30	80,5	93,70	43,9	11	M12x1,5	23	3,0	6	6,00	0,65
GB 400	KHNC 400	130	32	12	26	125,0	54	43,0	144,00	92,7	106,00	54,7	16	M12x1,5	25	3,0	7	7,00	1,00
GB 500	KHNC 500	150	45	18	30	160,0	60	50,0	252,20	122,3	195,00	64,8	18	M16x1,5	30	4,0	9	8,50	2,20

Harte Aufsatzbacken HB ...
Hardened top jaws HB ...



Backentyp Jaw type	Futtergröße Chuck size	Außenspannung External chucking				Innenspannung Internal chucking			B	a	b	d	kg / Stück kg / piece
		ø 1	ø 2	ø 3	ø 4	ø 5	ø 6	ø 7					
HB 140	KHNC 140	8 - 52	18 - 62	62 - 105	89 - 132	62 - 107	89 - 134	133 - 178	96,5	20	7,5	62	-
HB 160	KHNC 160	8 - 55	45 - 90	88 - 135	115 - 160	65 - 110	90 - 135	135 - 180	104,5	20	7,5	63	0,23
HB 160	KHNC 185	12 - 60	50 - 95	95 - 140	120 - 165	70 - 115	95 - 140	140 - 185	104,5	20	7,5	63	0,23
HB 200	KHNC 200	10 - 65	60 - 120	115 - 170	140 - 200	75 - 125	105 - 155	155 - 200	113,0	22	10,0	72	0,33
HB 250	KHNC 250	10 - 90	-	85 - 170	165 - 250	90 - 175	170 - 250	-	132,0	30	14,0	90	0,67
HB 250	KHNC 315	10 - 155	-	85 - 235	165 - 315	90 - 235	170 - 315	-	132,0	30	14,0	90	0,67
HB 400	KHNC 400	16 - 210	-	95 - 290	205 - 400	95 - 290	205 - 400	-	156,0	36	15,0	105	1,10
HB 500	KHNC 500	25 - 270	-	140 - 380	260 - 500	135 - 380	255 - 500	-	185,0	45	20,0	130	2,33

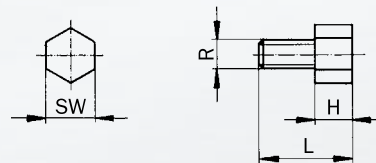
Harte, umkehrbare Stufenbacken SB ...
Hardened, reversible stepped jaws SB ...



Backentyp Jaw type	Futtergröße Chuck size	Außenspannung External chucking				Innenspannung Internal chucking			B	a	b	d	kg / Stück kg / piece
		Ø 1	Ø 2	Ø 3	Ø 4	Ø 5	Ø 6	Ø 7					
SB 140	KHNC 140	8 - 52	18 - 62	62 - 105	89 - 132	62 - 107	89 - 134	133 - 176	82,0	20	7,5	62	-
SB 160	KHNC 160	8 - 55	45 - 90	88 - 135	115 - 160	65 - 110	90 - 135	135 - 180	82,5	20	7,5	79	0,47
SB 160	KHNC 185	12 - 60	50 - 95	95 - 140	120 - 165	70 - 115	95 - 140	140 - 185	82,5	20	7,5	79	0,47
SB 200	KHNC 200	10 - 65	60 - 120	115 - 170	140 - 200	75 - 125	105 - 155	155 - 200	93,0	22	10,0	94	0,63
SB 250	KHNC 250	10 - 90	-	85 - 170	165 - 250	90 - 175	170 - 250	-	115,0	26	14,0	114	1,10
SB 250	KHNC 315	10 - 155	-	85 - 235	165 - 315	90 - 235	170 - 315	-	115,0	26	14,0	114	1,10
SB 400	KHNC 400	16 - 210	-	95 - 290	205 - 400	90 - 290	205 - 400	-	138,0	32	15,0	129	1,77
SB 500	KHNC 500	25 - 270	-	140 - 380	260 - 500	135 - 380	255 - 500	-	152,0	45	20,0	166	3,60

Auflagebolzen AB ...
für Greiferbacken HGKA und HGKI
Werkstoff C 35 K

Supporting bolts AB ...
for gripper jaws HGKA and HGKI
Material C 35 K



Bolzentyp Bolt type	Futtergröße Chuck size						H	L	SW	R
AB 56	140	160	185	200	250	315	5	13	10	M 6
AB 106	140	160	185	200	250	315	10	18	10	M 6
AB 156	-	160	185	200	250	315	15	23	10	M 6
AB 206	-	-	-	-	250	315	20	28	10	M 6
AB 58	-	-	-	-	400	500	5	17	14	M 8
AB 108	-	-	-	-	400	500	10	22	14	M 8
AB 158	-	-	-	-	400	500	15	27	14	M 8
AB 208	-	-	-	-	400	500	20	32	14	M 8
AB 258	-	-	-	-	-	500	25	37	14	M 8

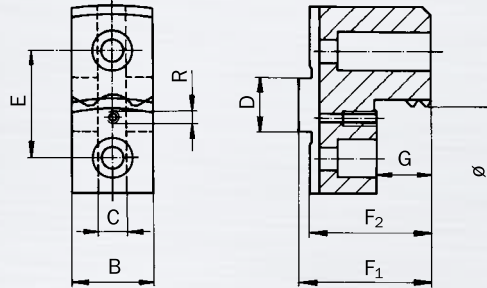


Backensystem KHNC | Jaw system KHNC

Zubehör | Accessories

Harte Greiferbacken HGKA
Außenspannung

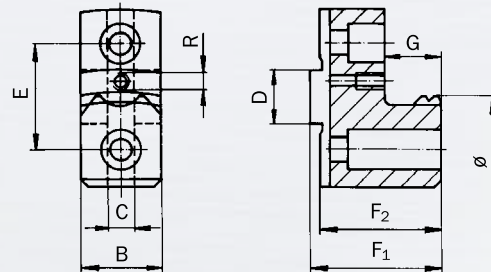
Hardened gripper jaws HGKA
External chucking



Backentyp Jaw type	Futtergröße Chuck size	Spannbereiche Ø mm Chucking ranges Ø mm		Schwingkreis Swing diameter	kg/Stück kg/piece	Abmessungen Dimensions							
		Grundbackenstellung Base jaw position				Ø	B	C	D	E	F ₁	F ₂	G
		I	II										
HGKA 141	KHNC 140	-	30 - 70	176	0,36	26	8	18	32	44	40	20	M 6
HGKA 163	KHNC 140	-	60 - 100	180	0,36	30	8	18	32	44	40	20	M 6
HGKA 143	KHNC 140	-	98 - 138	190	0,36	30	8	18	32	44	40	20	M 6
HGKA 162	KHNC 160	40 - 85	-	207	0,40	26	8	18	32	44	40	20	M 6
HGKA 163	KHNC 160	-	59 - 105	214	0,36	30	8	18	32	44	40	20	M 6
HGKA 163	KHNC 160	88 - 133	-	215	0,36	30	8	18	32	44	40	20	M 6
HGKA 167	KHNC 160	-	110 - 156	167	0,43	30	8	18	32	44	40	20	M 6
HGKA 162	KHNC 185	55 - 101	-	222	0,40	26	8	18	32	44	40	20	M 6
HGKA 163	KHNC 185	102 - 148	-	258	0,36	30	8	18	32	44	40	20	M 6
HGKA 167	KHNC 185	-	125 - 170	233	0,43	30	8	18	32	44	40	20	M 6
HGKA 167	KHNC 185	153 - 199	-	262	0,43	30	8	18	32	44	40	20	M 6
HGKA 212	KHNC 200	33 - 71	-	236	0,53	26	10	20	40	49	45	20	M 6
HGKA 213	KHNC 200	-	67 - 112	253	0,46	30	10	20	40	49	45	20	M 6
HGKA 213	KHNC 200	109 - 146	-	239	0,46	30	10	20	40	49	45	20	M 6
HGKA 216	KHNC 200	145 - 190	-	255	0,50	30	10	20	40	49	45	20	M 6
HGKA 263	KHNC 250	-	31 - 75	286	0,53	30	12	20	40	55	50	25	M 6
HGKA 266	KHNC 250	-	75 - 120	286	0,66	40	12	20	40	55	50	25	M 6
HGKA 268	KHNC 250	-	119 - 154	286	0,66	40	12	20	40	55	50	25	M 6
HGKA 268	KHNC 250	180 - 248	-	304	0,70	40	12	20	40	55	50	25	M 6
HGKA 263	KHNC 315	-	42 - 110	334	0,53	30	12	20	40	55	50	25	M 6
HGKA 266	KHNC 315	-	75 - 167	334	0,66	40	12	20	40	55	50	25	M 6
HGKA 268	KHNC 315	-	119 - 201	334	0,66	40	12	20	40	55	50	25	M 6
HGKA 268	KHNC 315	180 - 274	-	352	0,70	40	12	20	40	55	50	25	M 6
HGKA 321	KHNC 400	-	55 - 108	375	1,10	40	12	26	54	59	53	25	M 8
HGKA 321	KHNC 400	87 - 183	-	373	1,10	40	12	26	54	59	53	25	M 8
HGKA 324	KHNC 400	-	148 - 242	402	0,93	40	12	26	54	59	53	25	M 8
HGKA 324	KHNC 400	238 - 374	-	454	0,93	40	12	26	54	59	53	25	M 8
HGKA 409	KHNC 500	-	87 - 151	492	2,20	50	18	30	60	78	71	33	M 8
HGKA 412	KHNC 500	-	153 - 285	525	0,93	50	18	30	60	78	71	33	M 8
HGKA 412	KHNC 500	284 - 450	-	568	0,93	50	18	30	60	78	71	33	M 8

Harte Greiferbacken HGKI
Außenspannung

Hardened gripper jaws HGKI
External chucking



Backentyp Jaw type	Futtergröße Chuck size	Spannbereiche Ø mm Chucking ranges Ø mm		Schwingkreis Swing diameter	kg/Stück kg/piece	Abmessungen Dimensions							
		Grundbackenstellung Base jaw position				Ø	B	C	D	E	F ₁	F ₂	G
		I	II										
HGKI 141	KHNC 140	50 - 90	-	184	0,30	26	8	18	32	44	40	20	M 6
HGKI 163	KHNC 140	75 - 117	-	180	0,30	30	8	18	32	44	40	20	M 6
HGKI 143	KHNC 140	96 - 143	-	181	0,30	30	8	18	32	44	40	20	M 6
HGKI 167	KHNC 160	47 - 76	-	197	0,33	26	8	18	32	44	40	20	M 6
HGKI 169	KHNC 160	-	72 - 107	205	0,30	30	8	18	32	44	40	20	M 6
HGKI 169	KHNC 160	100 - 136	-	197	0,30	30	8	18	32	44	40	20	M 6
HGKI 167	KHNC 185	55 - 100	-	222	0,33	26	8	18	32	44	40	20	M 6
HGKI 169	KHNC 185	-	86 - 132	229	0,30	30	8	18	32	44	40	20	M 6
HGKI 169	KHNC 185	115 - 160	-	222	0,30	30	8	18	32	44	40	20	M 6
HGKI 209	KHNC 200	60 - 85	-	236	0,60	30	10	20	40	49	45	20	M 6
HGKI 211	KHNC 200	-	86 - 121	251	0,46	30	10	20	40	49	45	20	M 6
HGKI 211	KHNC 200	120 - 165	-	239	0,46	30	10	20	40	49	45	20	M 6
HGKI 261	KHNC 250	80 - 134	-	304	0,93	40	12	20	40	55	50	25	M 6
HGKI 264	KHNC 250	-	126 - 180	309	0,63	40	12	20	40	55	50	25	M 6
HGKI 264	KHNC 250	186 - 230	-	305	0,63	40	12	20	40	55	50	25	M 6
HGKI 261	KHNC 315	80 - 134	-	304	0,93	40	12	20	40	55	50	25	M 6
HGKI 264	KHNC 315	-	112 - 180	309	0,63	40	12	20	40	55	50	25	M 6
HGKI 264	KHNC 315	184 - 278	-	334	0,63	40	12	20	40	55	50	25	M 6
HGKI 319	KHNC 400	98 - 181	-	373	0,93	40	12	26	54	59	53	25	M 8
HGKI 322	KHNC 400	-	146 - 268	430	0,63	40	12	26	54	59	53	25	M 8
HGKI 322	KHNC 400	208 - 358	-	440	0,63	40	12	26	54	59	53	25	M 8

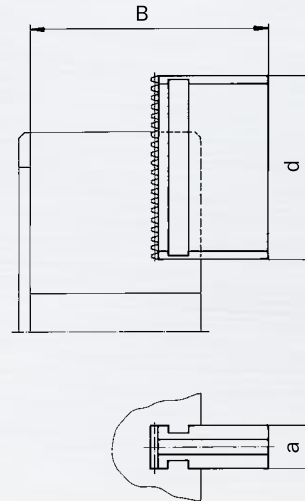


Backensystem KHNC | Jaw system KHNC

Zubehör | Accessories

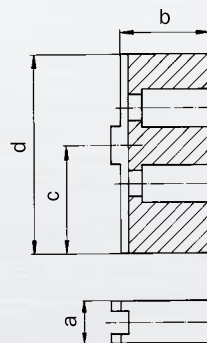
Monoblockbacken MB ...
vergütet, umkehrbar

Monobloc jaws MB
tempered, reversible



Backentyp Jaw type	Futtergröße Chuck size	B	a	d	kg / Stück kg / piece
MB 140	KHNC 140	97	20	70	-
MB 160	KHNC 160	105	20	79	0,47
MB 160	KHNC 185	105	20	79	0,47
MB 200	KHNC 200	123	22	93	0,67
MB 250	KHNC 250	143	26	115	1,50
MB 250	KHNC 315	143	26	115	1,50
MB 400	KHNC 400	168	32	140	2,50
MB 500	KHNC 500	192	45	176	5,23

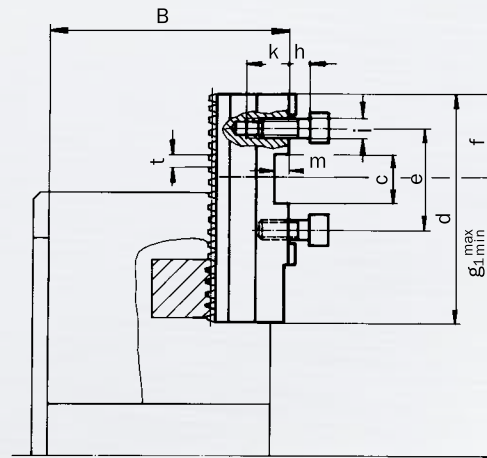
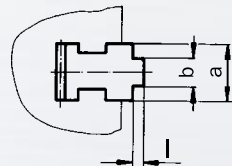
Weiche Aufsatzbacken WB ...
Soft top jaws WB ...



Backentyp Jaw type	Futtergröße Chuck size	a	b	c	d	kg / Stück kg / piece
WB 140	KHNC 140	20	34,0	30	60,0	-
WB 160	KHNC 160	20	35,5	51	85,0	0,43
WB 160	KHNC 185	20	35,5	51	85,0	0,43
WB 200	KHNC 200	22	43,0	60	105,0	0,73
WB 250	KHNC 250	30	50,0	80	125,5	1,33
WB 250	KHNC 315	30	50,0	80	125,5	1,33
WB 400	KHNC 400	35	54,0	87	145,0	2,00
WB 500	KHNC 500	50	73,0	115	180,0	4,67

Harte Grundbacken GB ...D
für Schutzdeckel SD...-.
Grundbackenstellung I

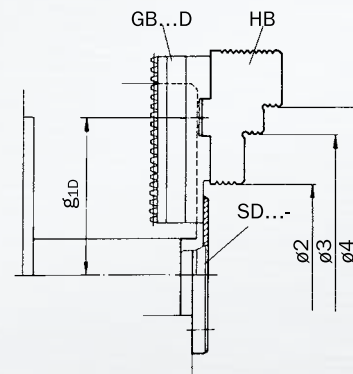
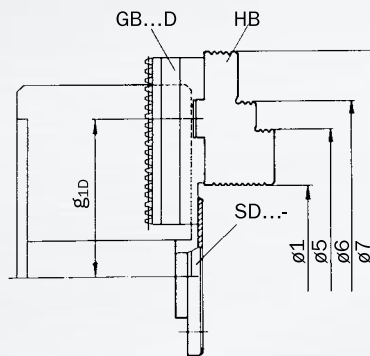
Hardened base jaws GB ...D
for protection plates SD
in base jaw position I



Backentyp Jaw type	Futtergröße Chuck size	B	a	b	c	d	e	f	g ₁		h	i	k	l	m	t	kg / Stück kg / piece
									max	min							
GB 160 D	KHNC 160	87	20	8	18	74	32	28	76,0	50,5	9	M 8 x 1,0	16	2,5	5	4,8	0,25
GB 160 D	KHNC 185	87	20	8	18	74	32	28	83,5	58,0	9	M 8 x 1,0	16	2,5	5	4,8	0,25
GB 200 D	KHNC 200	95	22	10	20	90	40	33	96,2	65,9	9	M 8 x 1,0	17	3,0	6	4,8	0,40
GB 250 D	KHNC 250	110	26	12	20	110	40	36	124,3	80,5	11	M 12 x 1,5	23	3,0	6	6,0	0,65
GB 250 D	KHNC 315	110	26	12	20	110	40	36	160,3	80,5	11	M 12 x 1,5	23	3,0	6	6,0	0,65
GB 400 D	KHNC 400	130	32	12	26	125	54	43	193,0	92,7	16	M 12 x 1,5	25	3,0	7	7,0	1,00
GB 500 D	KHNC 500	150	45	18	30	160	60	50	252,5	122,3	18	M 16 x 1,5	30	4,0	9	8,5	2,20

Schutzdeckel SD
(Nur verwendbar mit Grundbacken
GB...D in Grundbackenstellung I)

Protection plate SD
(applicable with base jaws GB ...D
only in base jaw position I)



Deckeltyp Plate type	Futtergröße Chuck size	Mittenabstand g _{1D} Distance g _{1D}		Backentyp Jaw type	Außenspannung External chucking							Innenspannung Internal chucking		
		min	max		Ø 1	Ø 2	Ø 3	Ø 4	Ø 5	Ø 6	Ø 7			
SD 160-1	KHNC 160	50,5	66,4	HB 160	38 - 66	45 - 90	88 - 116	115 - 142	95 - 122	120 - 148	165 - 192			
SD 160-2	KHNC 160	64,9	76,0	HB 160	66 - 85	72 - 90	116 - 135	142 - 160	122 - 140	148 - 165	192 - 210			
SD 185-1	KHNC 185	58,0	69,1	HB 160	43 - 71	50 - 95	93 - 121	120 - 147	100 - 127	125 - 153	170 - 197			
SD 185-2	KHNC 185	67,6	83,5	HB 160	71 - 90	77 - 95	121 - 140	125 - 165	127 - 145	153 - 170	197 - 215			
SD 200-1	KHNC 200	65,9	81,8	HB 200	63 - 92	63 - 92	115 - 142	140 - 170	128 - 154	148 - 180	208 - 234			
SD 200-2	KHNC 200	80,3	96,2	HB 200	92 - 118	92 - 120	142 - 170	170 - 200	154 - 178	180 - 208	234 - 260			
SD 250-1	KHNC 250	80,5	106,3	HB 250	82 - 130	-	85 - 132	165 - 212	162 - 210	242 - 290	-			
SD 250-2	KHNC 250	98,5	124,3	HB 250	120 - 165	-	120 - 170	200 - 250	198 - 247	280 - 322	-			
SD 315-1	KHNC 315	80,5	106,3	HB 250	82 - 130	-	85 - 130	165 - 212	162 - 210	242 - 290	-			
SD 315-2	KHNC 315	104,5	130,3	HB 250	130 - 178	-	130 - 178	212 - 260	210 - 256	290 - 338	-			
SD 315-3	KHNC 315	128,2	160,3	HB 250	178 - 238	-	178 - 240	260 - 320	256 - 316	338 - 398	-			
SD 400-1	KHNC 400	92,7	130,0	HB 400	92 - 164	-	95 - 168	205 - 275	170 - 240	280 - 350	-			
SD 400-2	KHNC 400	127,7	165,0	HB 400	164 - 232	-	168 - 236	275 - 345	240 - 310	350 - 420	-			
SD 400-3	KHNC 400	162,7	193,0	HB 400	232 - 285	-	236 - 290	345 - 400	310 - 365	420 - 475	-			
SD 500-1	KHNC 500	122,3	167,5	HB 500	140 - 220	-	140 - 215	260 - 335	250 - 330	370 - 450	-			
SD 500-2	KHNC 500	164,8	210,0	HB 500	220 - 305	-	216 - 302	335 - 420	330 - 416	450 - 535	-			
SD 500-3	KHNC 500	207,3	252,3	HB 500	305 - 385	-	302 - 385	420 - 505	416 - 495	535 - 615	-			