

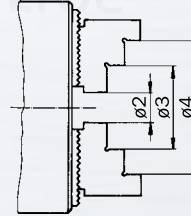
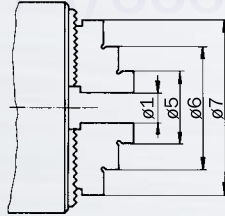


Backensystem KH | Jaw system KH

Zubehör | Accessories

Spannbereiche für
harte Aufsatzbacken HB

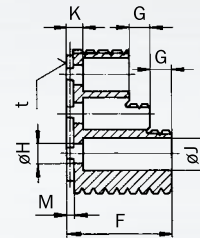
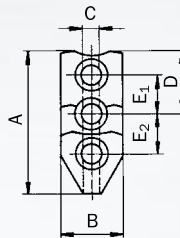
Chucking ranges for
hardened top jaws HB



Backentyp Jaw type	Futtergröße Chuck size	Außenspannung External chucking							Innenspannung Internal chucking					
		Ø 1		Ø 2		Ø 3		Ø 4		Ø 5		Ø 6		Ø 7
HB 211	110	6 - 22	34 - 50	-	-	48 - 63	75 - 90	62 - 77	89 - 105	58 - 73	85 - 100	72 - 87	100 - 115	-
HB 232	140	6 - 26	36 - 59	18 - 36	46 - 73	72 - 92	102 - 128	88 - 107	118 - 145	70 - 90	100 - 123	86 - 106	116 - 139	139 - 160
HB 232	160	9 - 40	46 - 74	24 - 50	56 - 88	78 - 106	112 - 143	94 - 122	128 - 160	73 - 104	110 - 138	89 - 120	127 - 154	142 - 174
HB 237	200	20 - 50	62 - 92	40 - 70	80 - 110	104 - 133	145 - 175	126 - 156	168 - 198	94 - 123	135 - 165	116 - 147	158 - 188	178 - 208
HB 240	250	20 - 50	78 - 112	46 - 73	102 - 131	139 - 167	196 - 224	169 - 198	226 - 255	124 - 154	180 - 215	154 - 184	211 - 245	244 - 274
HB 240	315	47 - 171		71 - 195		165 - 289		195 - 320		150 - 274		180 - 304		271 - 338
HB 228	400	82 - 140	156 - 215	105 - 160	178 - 236	230 - 288	306 - 365	268 - 326	342 - 401	205 - 262	280 - 336	244 - 300	318 - 376	370 - 426
HB 228	500	82 - 315		105 - 332		230 - 460		268 - 498		205 - 436		244 - 476		370 - 526
HB 228	630	82 - 440		105 - 458		230 - 586		268 - 622		205 - 560		244 - 600		370 - 652

Harte Aufsatzbacken HB
Ausführung 'Spitzverzahnung'

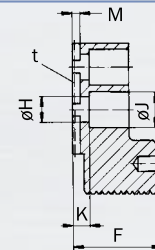
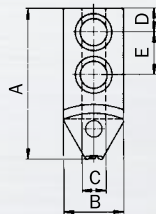
Hardened top jaws HB
serrated style



Backentyp Jaw type	Futtergröße Chuck size	A	B	C	D	E ₁	E ₂	F	G	H	J	K	M	t	kg / Stück kg / piece
HB 211	110	50	24	8	24	14,3	14,3	34	6,5	9,5	13,2	7	3,0	1/16" x 90°	-
HB 232	140	66	25	10	30	17,0	19,0	38	6,5	10,5	16,2	7	3,0	1/16" x 90°	0,21
HB 232	160	66	25	10	30	17,0	19,0	38	6,5	10,5	16,2	7	3,0	1/16" x 90°	0,21
HB 237	200	79	30	12	35	21,0	21,0	44	8,0	13,0	18,0	8	3,5	1/16" x 90°	0,35
HB 240	250	112	40	16	50	29,0	29,0	60	12,0	17,0	25,0	10	4,0	1/16" x 90°	0,95
HB 240	315	112	40	16	50	29,0	29,0	60	12,0	17,0	25,0	10	4,0	1/16" x 90°	0,95
HB 228	400	144	50	20	67	38,0	38,0	75	15,0	22,0	33,0	11	5,0	3/32" x 90°	1,90
HB 228	500	144	50	20	67	38,0	38,0	75	15,0	22,0	33,0	11	5,0	3/32" x 90°	1,90
HB 228	630	144	50	20	67	38,0	38,0	75	15,0	22,0	33,0	11	5,0	3/32" x 90°	1,90

Harte Stangenspannbacken HBS
Ausführung 'Spitzverzahnung'

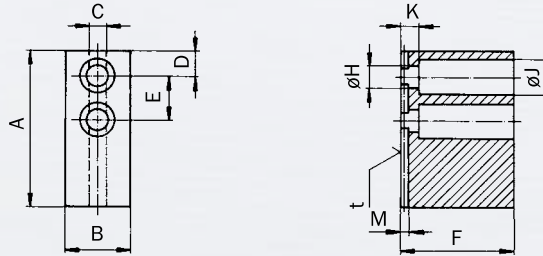
Hardened top jaws HBS
serrated style, for bar work



Backentyp Jaw type	Futtergröße Chuck size	Spann Ø Chucking Ø	A	B	C	D	E	F	H	J	K	M	t	kg / Stück kg / piece
HBS 211	110	19 - 34	43,0	24	8	8,7	14,3	34	9,5	13,2	7	3,0	1/16" x 90°	0,12
HBS 221	140	6 - 34	59,0	25	10	9,5	17,0	38	10,5	16,2	7	3,0	1/16" x 90°	0,22
HBS 232	160	8 - 43	63,0	25	10	9,5	17,0	38	10,5	16,2	7	3,0	1/16" x 90°	0,23
HBS 237-1	200	10 - 40	82,0	30	12	12,0	21,0	44	13,0	18,0	8	3,5	1/16" x 90°	0,42
HBS 237-2	200	40 - 70	67,0	30	12	12,0	21,0	44	13,0	18,0	8	3,5	1/16" x 90°	0,35
HBS 224-1	250	10 44 - 76	122,5	40	16	15,0	29,0	60	17,0	25,0	10	4,0	1/16" x 90°	1,14
HBS 240	250	73 - 100	79,0	40	16	15,0	29,0	60	17,0	25,0	10	4,0	1/16" x 90°	-
HBS 224-1	315	13 - 76	122,5	40	16	15,0	29,0	60	17,0	25,0	10	4,0	1/16" x 90°	1,14
HBS 224-2	315	57 - 120	100,5	40	16	15,0	29,0	60	17,0	25,0	10	4,0	1/16" x 90°	1,01

Weiche Aufsatzbacken WB
Ausführung 'Spitzverzahnung'

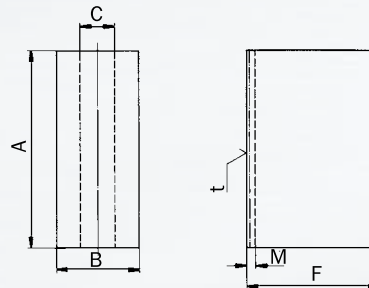
Soft top jaws WB
serrated style



Backentyp Jaw type	Futtergröße Chuck size	A	B	C	D + 0,05	E	F	H	J	K	M	t	kg / Stück kg / piece
WB 211	110	55	22	8	11	14	35	9,5	13,2	7	3,0	1/16" x 90°	0,25
WB 232	140	70	25	10	13	19	45	10,5	16,2	7	3,0	1/16" x 90°	0,45
WB 232	160	70	25	10	13	19	45	10,5	16,2	7	3,0	1/16" x 90°	0,45
WB 235	200	84	30	12	18	21	45	13,0	18,0	8	3,5	1/16" x 90°	0,90
WB 237	200	90	30	12	14	21	60	13,0	18,0	8	3,5	1/16" x 90°	1,00
WB 240	250	111	40	16	18	29	60	17,0	25,0	10	4,0	1/16" x 90°	1,80
WB 240	315	111	40	16	18	29	60	17,0	25,0	10	4,0	1/16" x 90°	1,80
WB 241	250	150	40	16	57	29	60	17,0	25,0	10	4,0	1/16" x 90°	2,31
WB 241	315	150	40	16	57	29	60	17,0	25,0	10	4,0	1/16" x 90°	2,31
WB 228	400	150	50	20	31	38	80	22,0	33,0	11	5,0	3/32" x 90°	2,80
WB 228	500	150	50	20	31	38	80	22,0	33,0	11	5,0	3/32" x 90°	2,80
WB 228	630	150	50	20	31	38	80	22,0	33,0	11	5,0	3/32" x 90°	2,80

Weiche Aufsatzbacken WBO
Ausführung 'Spitzverzahnung'
ohne Befestigungsbohrungen

Soft top jaws WBO
serrated style
without fixing holes



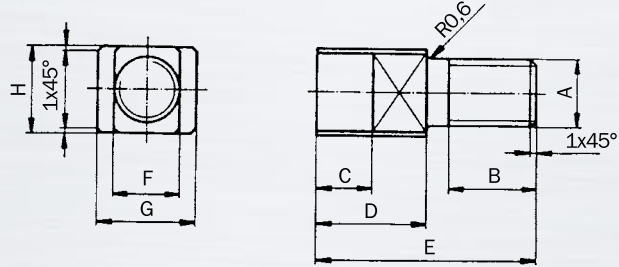
Backentyp Jaw type	Futtergröße Chuck size	A	B	C	F	M	t	kg / Stück kg / piece
WBO 211	110	55	22	8	35	3,0	1/16" x 90°	-
WBO 232	140	70	25	10	45	3,0	1/16" x 90°	0,60
WBO 232	160	70	25	10	45	3,0	1/16" x 90°	0,60
WBO 235	200	84	30	12	45	3,5	1/16" x 90°	0,86
WBO 237	200	90	30	12	60	3,5	1/16" x 90°	1,24
WBO 240	250	111	40	16	60	4,0	1/16" x 90°	2,10
WBO 240	315	111	40	16	60	4,0	1/16" x 90°	2,10
WBO 241	250	150	40	16	60	4,0	1/16" x 90°	2,75
WBO 241	315	150	40	16	60	4,0	1/16" x 90°	2,75



Backensystem KH | Jaw system KH

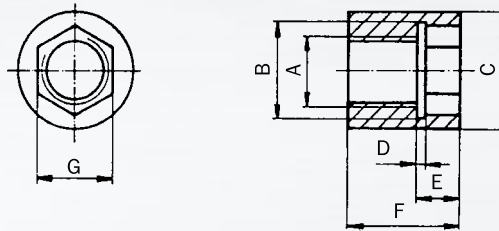
Zubehör | Accessories

T-Nutenschrauben TS
T-Tenon screws TS



TYP TYPE	Futtergröße Chuck size			A	B	C	D	E	F _{g6}	G	H
TS 09	110			M 9 x 1	10	7,0	17,3	29,5	8	13	10
TS 10	140	160		M 10	12	9,3	20,3	35,3	10	16	13
TS 12	200			M 12	14	9,0	23,2	40,5	12	18	14
TS 16	250	315		M 16	18	12,0	26,7	50,0	16	24	18
TS 20	400	500	630	M 20	23	16,0	32,7	62,0	20	30	25

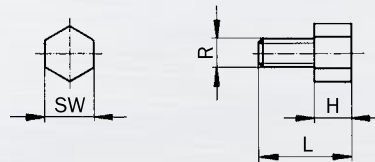
Mutter TM
Nuts TM



TYP TYPE	Futtergröße Chuck size			A	B	C	D	E	F	G
TM 09/1	110			M 9 x 1	9,2	13,0	2,0	6	13	SW 6,1
TM 10/1	140	160		M 10	10,2	16,0	2,0	7	16	SW 8,1
TM 12/1	200			M 12	12,2	17,8	2,0	8	19	SW 10,1
TM 16/1	250	315		M 16	16,2	24,5	2,0	10	25	SW 14,1
TM 20/1	400	500	630	M 20	20,2	32,0	2,5	11	32	SW 17,1

Auflagebolzen AB ...
für Greiferbacken HGKHA und HGKHI
Werkstoff C 35 K

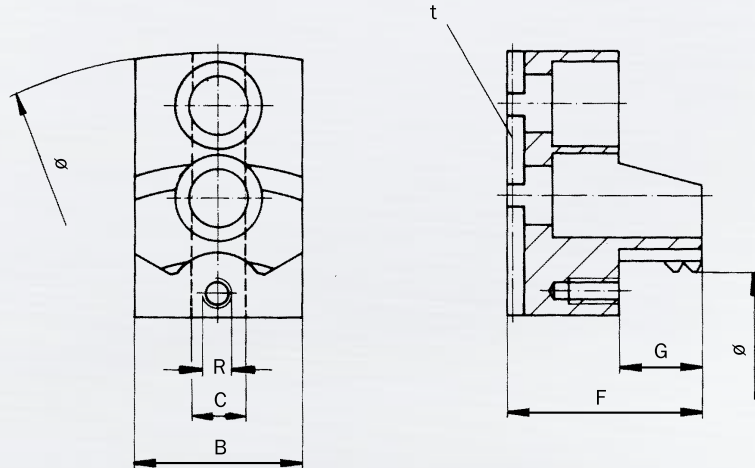
Supporting bolts AB
for gripper jaws HGKHA and HGKHI
Material C 35 K



TYP TYPE	Futtergröße Chuck size								H	L	SW	R
AB 56	110	140	160	175	200	250	315	5	13	10	M 6	
AB 106	110	140	160	175	200	250	315	10	18	10	M 6	
AB 156	-	-	160	175	200	250	315	15	23	10	M 6	
AB 206	-	-	-	-	-	250	315	20	28	10	M 6	
AB 58	-	-	-	-	-	400	500	5	17	14	M 8	
AB 108	-	-	-	-	-	400	500	10	22	14	M 8	
AB 158	-	-	-	-	-	400	500	15	27	14	M 8	
AB 208	-	-	-	-	-	400	500	20	32	14	M 8	
AB 258	-	-	-	-	-	-	500	25	37	14	M 8	

Harte Greiferbacken HGKHA
Ausführung 'Spitzverzahnung'
und Außenspannung

Hardened gripper jaws HGKHA
serrated style and external
chucking



Backentyp Jaw type	Futtergröße Jaw size	Außenspannung External chucking	Abmessungen			Dimensions			Schwingkreis Swing diameter	kg / Stück kg / piece
			Ø	B	C	F	G	R		
HGKHA 111	KH 110	32 - 47	25	8	34,0	13	M 6	1/16" x 90°	128	0,20
HGKHA 112	KH 110	47 - 63	30	8	34,0	13	M 6	1/16" x 90°	128	0,20
HGKHA 113	KH 110	63 - 80	30	8	34,0	13	M 6	1/16" x 90°	128	0,20
HGKHA 114	KH 110	80 - 97	30	8	34,0	13	M 6	1/16" x 90°	135	0,22
HGKHA 141	KH 140	36 - 60	30	10	37,0	13	M 6	1/16" x 90°	158	0,27
HGKHA 142	KH 140	60 - 85	30	10	37,0	13	M 6	1/16" x 90°	158	0,27
HGKHA 143	KH 140	85 - 110	30	10	37,0	13	M 6	1/16" x 90°	158	0,27
HGKHA 144	KH 140	110 - 135	30	10	37,0	13	M 6	1/16" x 90°	170	0,25
HGKHA 141	KH 160	46 - 80	30	10	37,0	13	M 6	1/16" x 90°	178	0,27
HGKHA 142	KH 160	71 - 105	30	10	37,0	13	M 6	1/16" x 90°	178	0,27
HGKHA 143	KH 160	96 - 130	30	10	37,0	13	M 6	1/16" x 90°	178	0,27
HGKHA 144	KH 160	120 - 154	30	10	37,0	13	M 6	1/16" x 90°	190	0,25
HGKHA 170	KH 200	52 - 84	35	12	50,0	20	M 6	1/16" x 90°	210	0,48
HGKHA 171	KH 200	66 - 98	35	12	50,0	20	M 6	1/16" x 90°	210	0,45
HGKHA 172	KH 200	88 - 120	35	12	50,0	20	M 6	1/16" x 90°	210	0,47
HGKHA 173	KH 200	110 - 142	35	12	50,0	20	M 6	1/16" x 90°	210	0,47
HGKHA 174	KH 200	132 - 164	35	12	50,0	20	M 6	1/16" x 90°	210	0,47
HGKHA 175	KH 200	150 - 185	35	12	50,0	20	M 6	1/16" x 90°	230	0,55
HGKHA 176	KH 200	174 - 206	35	12	50,0	20	M 6	1/16" x 90°	250	0,63
HGKHA 250	KH 250	74 - 110	45	16	60,0	22	M 6	1/16" x 90°	322	1,40
HGKHA 251	KH 250	95 - 122	45	16	60,0	22	M 6	1/16" x 90°	264	0,95
HGKHA 252	KH 250	129 - 157	45	16	60,0	22	M 6	1/16" x 90°	264	0,90
HGKHA 253	KH 250	163 - 191	45	16	60,0	22	M 6	1/16" x 90°	264	0,93
HGKHA 254	KH 250	197 - 225	45	16	60,0	22	M 6	1/16" x 90°	264	0,93
HGKHA 250	KH 315	50 - 164	45	16	60,0	22	M 6	1/16" x 90°	387	1,40
HGKHA 251	KH 315	120 - 186	45	16	60,0	22	M 6	1/16" x 90°	329	0,95
HGKHA 252	KH 315	155 - 220	45	16	60,0	22	M 6	1/16" x 90°	329	0,90
HGKHA 253	KH 315	200 - 256	45	16	60,0	22	M 6	1/16" x 90°	329	0,93
HGKHA 254	KH 315	224 - 290	45	16	60,0	22	M 6	1/16" x 90°	329	0,93
HGKHA 401	KH 400	70 - 130	50	20	78,4	33	M 8	3/32" x 90°	430	-
HGKHA 402	KH 400	130 - 190	50	20	78,4	33	M 8	3/32" x 90°	430	2,13
HGKHA 403	KH 400	190 - 250	60	20	78,4	33	M 8	3/32" x 90°	430	-
HGKHA 404	KH 400	250 - 310	60	20	78,4	33	M 8	3/32" x 90°	430	1,97
HGKHA 405	KH 400	310 - 370	60	20	78,4	33	M 8	3/32" x 90°	460	1,96

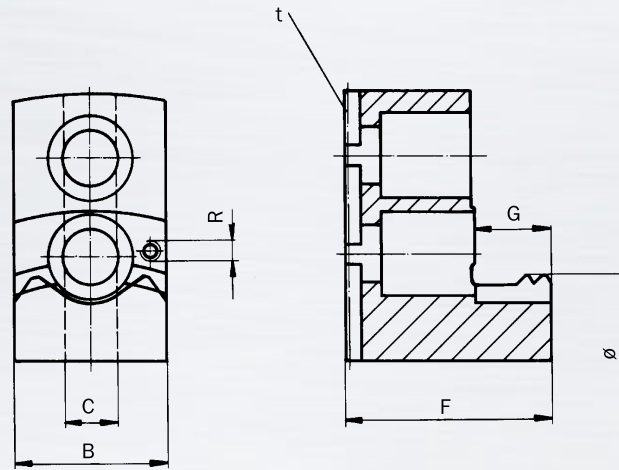


Backensystem KH | Jaw system KH

Zubehör | Accessories

Harte Greiferbacken HGKHI
Ausführung 'Spitzverzahnung'
und Innenspannung

Hardened gripper jaws HGKHI
serrated style and internal
chucking



Backentyp Jaw type	Futtergröße Jaw size	Außenspannung Internal chucking	Abmessungen Dimensions						Schwingkreis Swing diameter	kg/Stück kg/piece
			Ø	B	C	F	G	R		
HGKHI 111	KH 110	32 - 47	25	8	34,0	13	M 6	1/16" x 90°	128	0,17
HGKHI 112	KH 110	47 - 63	30	8	34,0	13	M 6	1/16" x 90°	128	0,25
HGKHI 113	KH 110	63 - 80	30	8	34,0	13	M 6	1/16" x 90°	128	0,25
HGKHI 114	KH 110	80 - 97	30	8	34,0	13	M 6	1/16" x 90°	135	0,23
HGKHI 141	KH 140	36 - 60	30	10	37,0	13	M 6	1/16" x 90°	158	0,27
HGKHI 142	KH 140	60 - 85	30	10	37,0	13	M 6	1/16" x 90°	158	0,27
HGKHI 143	KH 140	85 - 110	30	10	37,0	13	M 6	1/16" x 90°	158	0,28
HGKHI 144	KH 140	110 - 135	30	10	37,0	13	M 6	1/16" x 90°	160	0,25
HGKHI 141	KH 160	46 - 80	30	10	37,0	13	M 6	1/16" x 90°	178	0,27
HGKHI 142	KH 160	71 - 105	30	10	37,0	13	M 6	1/16" x 90°	178	0,27
HGKHI 143	KH 160	96 - 130	30	10	37,0	13	M 6	1/16" x 90°	178	0,28
HGKHI 144	KH 160	120 - 154	30	10	37,0	13	M 6	1/16" x 90°	190	0,25
HGKHI 171	KH 200	70 - 102	35	12	50,0	20	M 6	1/16" x 90°	216	0,60
HGKHI 172	KH 200	92 - 124	35	12	50,0	20	M 6	1/16" x 90°	216	0,53
HGKHI 173	KH 200	114 - 146	35	12	50,0	20	M 6	1/16" x 90°	216	0,53
HGKHI 174	KH 200	136 - 168	35	12	50,0	20	M 6	1/16" x 90°	216	0,53
HGKHI 175	KH 200	158 - 190	35	12	50,0	20	M 6	1/16" x 90°	216	0,53
HGKHI 251	KH 250	100 - 128	45	16	60,0	22	M 6	1/16" x 90°	268	1,20
HGKHI 252	KH 250	134 - 163	45	16	60,0	22	M 6	1/16" x 90°	268	1,00
HGKHI 253	KH 250	168 - 198	45	16	60,0	22	M 6	1/16" x 90°	268	0,80
HGKHI 254	KH 250	202 - 232	45	16	60,0	22	M 6	1/16" x 90°	268	0,95
HGKHI 251	KH 315	127 - 192	45	16	60,0	22	M 6	1/16" x 90°	333	1,20
HGKHI 252	KH 315	161 - 227	45	16	60,0	22	M 6	1/16" x 90°	333	1,20
HGKHI 253	KH 315	196 - 262	45	16	60,0	22	M 6	1/16" x 90°	333	0,95
HGKHI 254	KH 315	230 - 296	45	16	60,0	22	M 6	1/16" x 90°	333	0,95
HGKHI 401	KH 400	100 - 160	50	20	78,4	25	M 8	3/32" x 90°	430	2,94
HGKHI 402	KH 400	160 - 220	50	20	78,4	33	M 8	3/32" x 90°	430	2,40
HGKHI 403	KH 400	220 - 280	50	20	78,4	33	M 8	3/32" x 90°	430	1,93
HGKHI 404	KH 400	280 - 340	60	20	78,4	33	M 8	3/32" x 90°	430	-
HGKHI 405	KH 400	340 - 400	60	20	78,4	33	M 8	3/32" x 90°	460	-